

Questions and Answers for IFB B26002128 (DAR IFB 2026-01)

1. Is Highway Side Fence 8'H or 6'H With Barbwire?

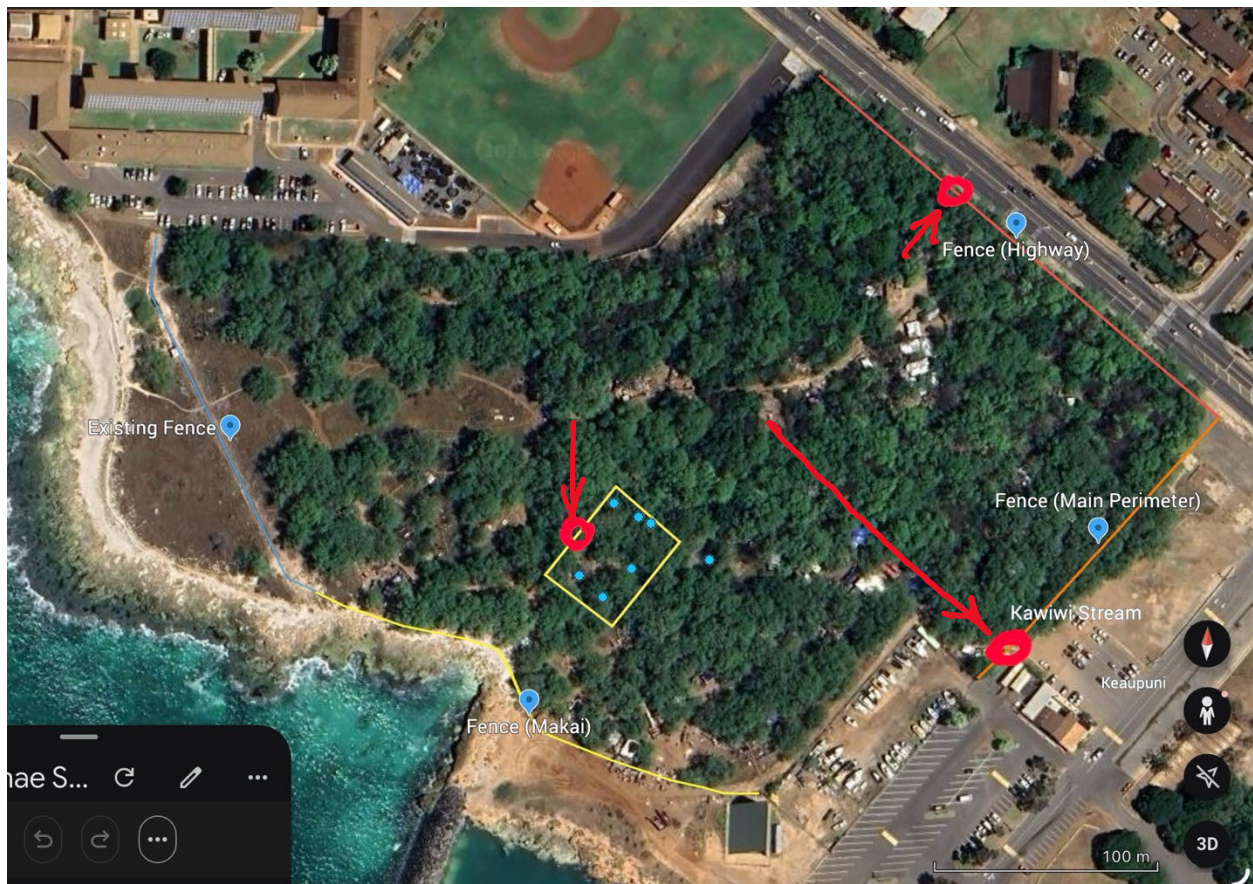
Provide standard chain link fence with barbed wire topping for the Highway Boundary Fence (Line Item 3) as specified in the IFB. Fence height shall be contractor standard (typically 6 ft or 8 ft) and sufficient to meet deterrence intent, subject to DLNR-DAR approval.

2. Is all fence mesh Barb Top / Knuckle Bottom?

Yes, barbed top / knuckle bottom is acceptable for chain link fencing unless otherwise specified.

3. Can you specify the locations and widths for all gates?

Gate locations and widths are not predefined. Per IFB, gates shall be installed at required sections, sized appropriately for maintenance access, and finalized in the field with DLNR-DAR. The attached photos show approximate locations of gates in red.



4. **What is “erosion resistant” fencing materials? Do we mean corrosion/rust resistant material? Is 1.2 oz or 2.0 oz Galvanized Chain Link Fabric acceptable? How about Aluminum or Aluminum Clad Chain Link Fabric? What about the posts, rails, fittings – type of material?**

“Erosion resistant” refers to corrosion-resistant materials suitable for coastal/salt spray conditions. Acceptable materials include zinc coated (galvanized) chain link, vinyl-coated systems, or equivalent corrosion-resistant materials. Contractor shall provide materials appropriate for coastal exposure, subject to approval. All posts, rails, and fittings shall be galvanized steel or equivalent corrosion resistant materials suitable for coastal conditions. The system must be compatible and durable.

5. **Each Line Item calls for access gates. How many? How Wide? What Type? Are there any details for the gates? Any Lock Boxes to protect padlocks from being cut?**

Gates are required at each fence section (Line Items 1, 2, and 3) and shall include lockable hardware and secure latching systems. Number, type, and width shall be based on site conditions and based on access needs, and finalized with DLNR-DAR. Contractors may recommend adjustments to gate locations or configurations for constructibility, subject to DLNR-DAR approval.

6. **“install protective fencing surrounding anchialine pools and sinkholes.” Are these separate fences around each individual pool/sinkholes or around several at one time?**

Fencing is intended to protect multiple anchialine pools and sinkholes within the designated interior area (Line Item 2) using a grouped configuration. Final fence layout and alignment will be field verified and approved by DLNR-DAR. Contractors may recommend minor adjustments to layout for constructibility or site conditions, subject to approval.

7. **What is “maintaining safe access routes”?**

“Maintaining safe access routes” means the contractor shall maintain safe access for authorized personnel, avoid blocking existing roads or access paths, and ensure construction activities do not create hazards.

8. **For the Highway Boundary Fence, include “additional deterrent features.” Can you explain what the intent of this phrase is? Note: A higher fence, even with barbed wire, only discourages someone from trying to climb over the fence. All one needs is a bolt cutter to cut the chain link wire and open up an access thru.**

Per IFB, the Highway Boundary Fence shall include barbed wire topping or increased fence height. This satisfies the requirement for “additional deterrent” features.

9. **Can you explain what the intent of this phrase. Note: A higher fence, even with the fence. However, should you use 3/4" mesh, 9 ga. by 8 ft. high, expanded metal mesh panels, it makes for difficult cutting thru or climbing over the fence. [more expensive than regular chain link, but more effective.] Board of Water Supply installs around reservoirs. Barbed wire would not really be necessary.**

The IFB specifies chain link fencing. Contractors may recommend alternative materials; however, any substitution must be approved by DLNR-DAR and shall not result in additional cost to the State.

10. **Noticed a lot of "Homeless People" living in the area that is to be enclosed. Will they be moved out or the area prior to construction? Are there any security plans to avoid conflicts during construction? Also, once the fence posts are set, and crew leaves jobsite, how can we protect the fence post that set in fresh concrete, from being knocked down?**

The State is coordinating site cleanup and transition efforts; however, site conditions may vary. Offerors shall account for existing conditions. The contractor is responsible for all means and methods to safely perform the work, including securing the work area and protecting materials, installations, and posts during curing. Temporary bracing, barricades, or similar measures may be used at the contractor's discretion. No site security will be provided by the State.

11. **Are there any boring logs that show conditions along the fence line? Especially, along the Makai side, fronting the beach. Is there a detail showing concrete footing installation if its all sand, that can not be dug neat?**

No geotechnical or boring logs are provided. Contractor shall verify field conditions, provide appropriate footing design and installation methods, and ensure fence stability under site conditions.

12. **Is a Bid Bond or Performance Bond Required for a project?**

No Bid Bond required. A Performance and Payment Bond is required per IFB Section 2.4.